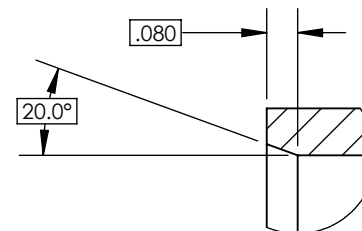
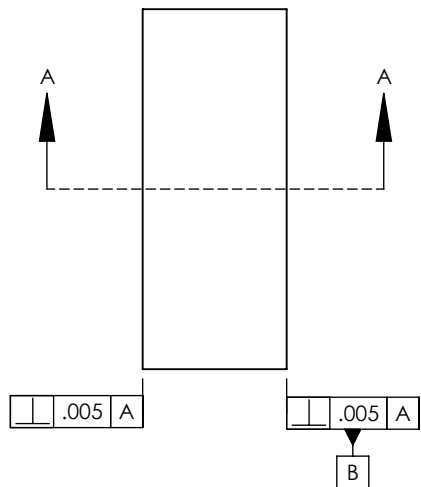
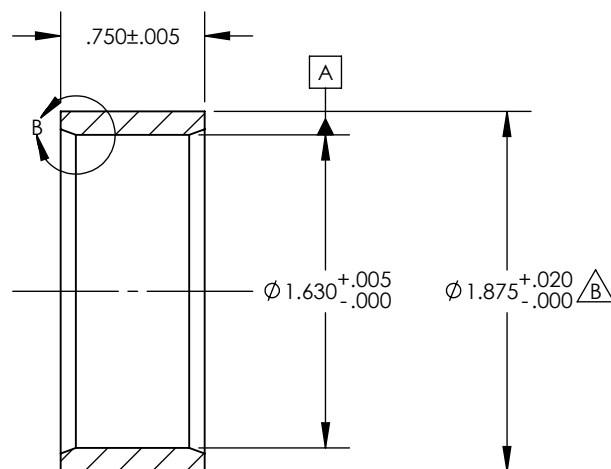


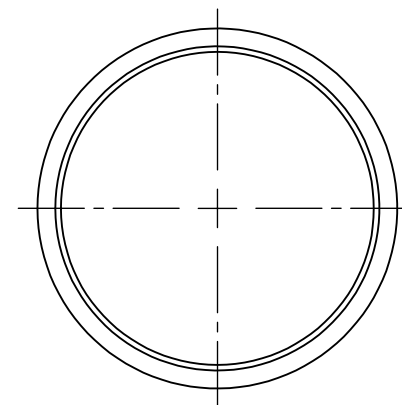
REVISIONS					
ECR	REV.	DESCRIPTION	DATE	ALTERED	APPR.
	A	INITIAL RELEASE	13/05/2014		
	B	FLIPPED TOL. BIAS	16/06/2014		KJC



DETAIL B
SCALE 2 : 1
2 PLACES



SECTION A-A



UNLESS OTHERWISE SPECIFIED:

1. ALL DIMENSIONS ARE IN INCHES
2. GEOMETRIC TOLERANCING AS PER ASME Y14.5 - 2009
3. UNTOLERANCED DIMENSIONS ARE BASIC
4. BREAK UNSPECIFIED EDGES AT .005 x 45°
5. UNSPECIFIED RADII ARE .005 MAX

6. DEBURR ALL SHARP EDGES

7. CONCENTRIC SURFACES ARE $\perp .005$ A B
8. FEATURES OF SIZE ARE $\phi .005$ A B C
9. GENERAL SURFACES ARE $\phi .010$ A B C
10. REMOVE FEATHER EDGE OF FIRST THREAD UNTIL FULL FORM WHERE APPLICABLE

PROPRIETARY AND CONFIDENTIAL
THE INFORMATION CONTAINED IN THIS
DRAWING IS THE SOLE PROPERTY OF
CATHEDRAL ENERGY SERVICES. ANY
REPRODUCTION IN PART OR AS A WHOLE
WITHOUT THE WRITTEN PERMISSION OF
CATHEDRAL ENERGY SERVICES IS
PROHIBITED.

MATERIAL
COBALT 6 ALLOY

FINISH
64uIN UOS

DO NOT SCALE DRAWING

NAME	DATE
DRAWN KJC	13/05/2014
CHECKED KWT	16/06/2014
ENG APPR.	-
MFG APPR.	-
Q.A.	-

TITLE:
RING-FIN RETAINING

SIZE
A
DWG. NO.
022-1-026

SCALE:1:1

REV.
B

SHEET 1 OF 1

STATUS:

MODEL

IN DESIGN

DWG.

RELEASED

